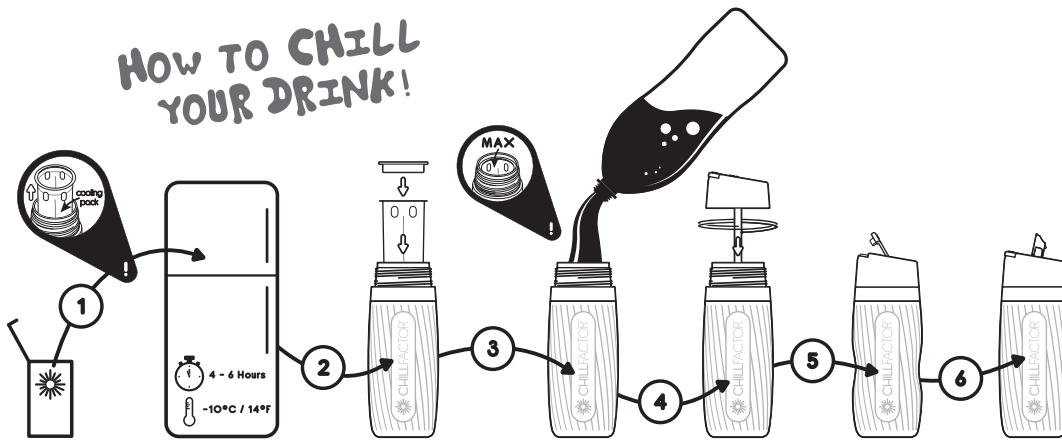


**CHILLFACTOR™** chill 'n drink  
**drink bottle**  
INSTRUCTIONS

**CAUTION:** Always check for leaks before freezing, avoid puncturing. The refrigerant liquid is non-toxic, however in the event a leak or puncture occurs, cease use and discard.

- Not suitable for use with carbonated drinks.
- Do not overfill.
- Only use drinks that are chilled or at room temperature. Hot drinks will not give you the desired result. (Ingredients higher than 60°C / 140°F could damage your product)

**HOW TO CHILL YOUR DRINK!**



- 1 Remove the CHILLFACTOR™ DRINK BOTTLE from its packaging and follow the cleaning instructions. Then place the cooling pack upright in the freezer. After 4 – 6 hours at below -10°C / 14°F ensure the cooling pack of the CHILLFACTOR™ DRINK BOTTLE is frozen. If not, then try overnight. (You may need to lower the temperature of your freezer)
- 2 Once removed from the freezer. Put the cooling pack back into the bottle and reassemble the drink bottle without the lid.
- 3 Pour in your favourite drink to the point where your drink meets the holes of the cooling pack. (Approx 600ml)
- 4 Once you have poured your drink, screw the lid back on.
- 5 Squeeze the bottle for 15 seconds. You will notice as the bottle chills, it amazingly adjusts its colour. This helps you to know when the water is cold.
- 6 Enjoy your chilled drink with either the sip spout or straw spout.

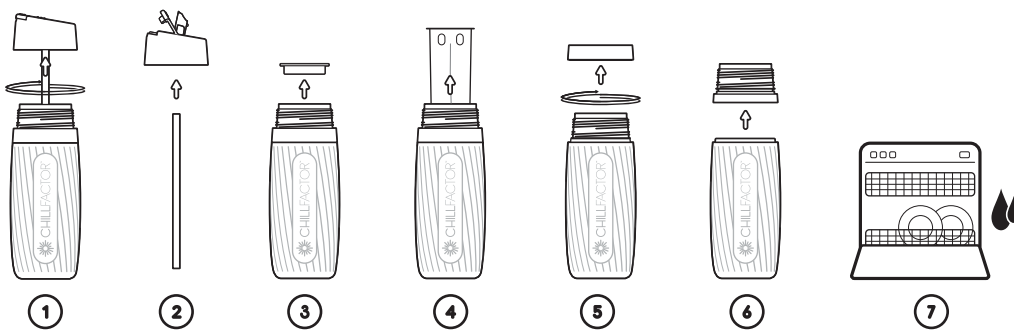
NPD 00004\_04

**HOW TO CLEAN YOUR DRINK BOTTLE!**

- 1 Unscrew and lift the lid.
- 2 Remove the straw, open the sip spout and straw spout.
- 3 Remove the washer.
- 4 Remove the cooling pack.
- 5 Unscrew and lift the upper collar.
- 6 Remove the lower collar from silicone bottle.
- 7 The lid, top collar, lower collar and washer are top-rack dishwasher safe. The bottle and the cooling pack are hand washable only.

**CARE INSTRUCTIONS**

- Don't pierce the bottle or its cooling pack with any sharp object.
- For optimum performance and longevity, after using we recommend always storing the cooling pack of the Chill Factor product in the freezer unit of your refrigerator.
- Be sure to wash the CHILLFACTOR™ DRINK BOTTLE before every use.
- The lid, top collar, lower collar and washer are top-rack dishwasher safe.
- The bottle and the cooling pack are hand washable only.
- This product is only suitable for exposure to temperatures in the range of -25°C to +60°C
- **CAUTION! ONLY USE COLD OR WARM WATER TO CLEAN THE COOLING PACK.**



FUNTASTIC LIMITED.  
Level 2, Tower 2, Chadstone Place,  
1541 Dandenong Road,  
Chadstone, 3148, Australia  
QUALITY GUARANTEE  
Funtastic Limited guarantees the quality of this Chill Factor™ Drink Bottle.  
If it doesn't meet your expectations call us on 1800 244 543 or email info@funtastic.com.au  
Patent Protected.  
Chinese Patent: ZL 2005 8 0042009.8  
AUS Patent: 2005336204  
US Patent: 7,647,782  
Various International Patents Pending over product and composition of materials in product.



[thechillfactor.com](http://thechillfactor.com)  
See me in action online.



**WE MAKE COOL STUFF THAT MAKES STUFF COOL**

	Project Name	Drink Bottle - Hyper Colour
	Item No.	CF001402-1405
	Packaging	Instruction
	Color	1C
	Size	(76mm folded) 152 mm W x 128 mm H
	Date	6 Nov 2014
	Color Ref.	