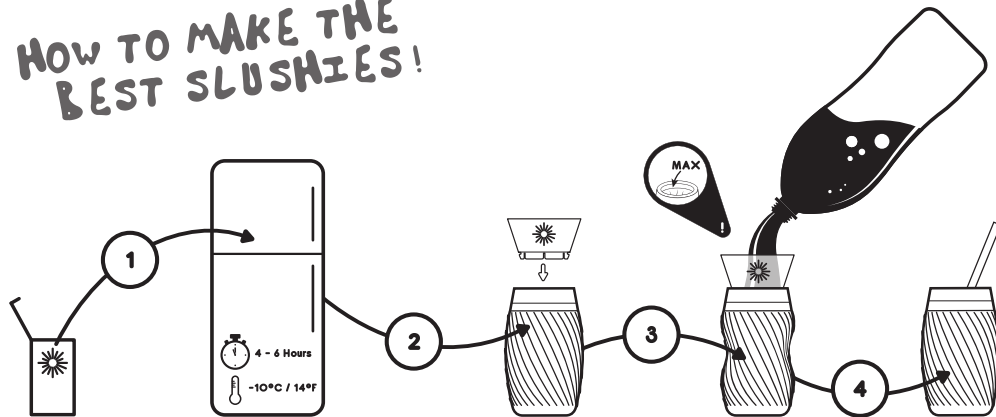




# ice twist slushy maker INSTRUCTIONS

- CAUTION: Always check for leaks before freezing. Avoid puncturing. The refrigerant liquid is non-toxic, however in the event a leak or puncture occurs, cease use and discard.
- Do not overfill.
- Only use drinks that are chilled. Hot drinks will not give you a slushy result (Ingredients higher than 60°C / 140°F could damage your product)
- Dairy products take longer to slush than juices or sodas. To achieve a better result with dairy, pour your ingredients into the cup and let it sit for 3 - 4 minutes in the freezer before you begin squeezing.

## HOW TO MAKE THE BEST SLUSHIES!



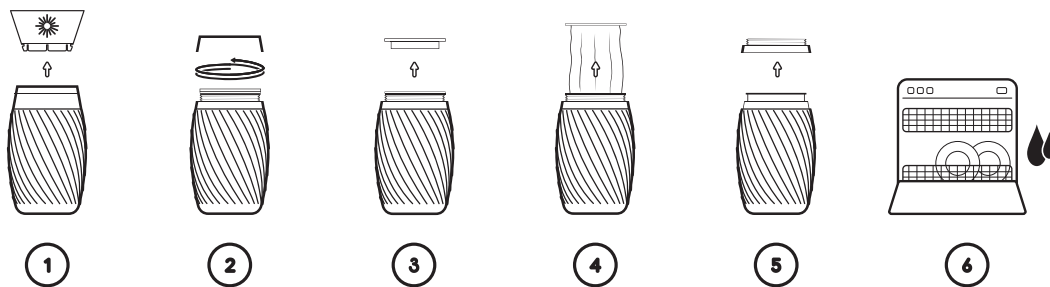
- 1 Remove the CHILLFACTOR™ ICE TWIST from its packaging and follow the cleaning instructions. Then place upright in the freezer.
- 2 After 4 - 6 hours at -10°C / 14°F ensure the walls of the CHILLFACTOR™ ICE TWIST are frozen. If not, then try overnight. (You may need to lower the temperature of your freezer)  
Once removed from the freezer, insert the funnel into the top opening of your CHILLFACTOR™ ICE TWIST.
- 3 Pour in your favorite chilled drink to the point where the cooling pack meet the plastic of the lid. (Approx 200-300ml)  
Once you have poured your drink, start squeezing the cup and in less than a minute you will have a delicious slushy treat!
- 4 When you are happy with the consistency of your slushy, stop squeezing, remove the funnel, insert your spoon straw and enjoy!

## HOW TO CLEAR YOUR ICE TWIST!

- 1 Remove the funnel.
- 2 Unscrew and lift the lid.
- 3 Remove the washer.
- 4 Squeeze the cooling pack and pull it out of the cup.
- 5 Remove the collar.
- 6 The funnel, washer and collar are top-rack dishwasher safe. The lid, cup and the cooling pack are hand washable only.

### CARE INSTRUCTIONS

- Don't pierce the cup or its cooling pack with any sharp object. Only use the plastic spoon straw to consume your slushy.
- For optimum performance and longevity, after using we recommend always storing the cooling pack of the Chill Factor product in the freezer unit of your refrigerator.
- Be sure to wash the CHILLFACTOR™ ICE TWIST before every use.
- The funnel, washer and collar are top-rack dishwasher safe.
- The lid, cup and the cooling pack are hand washable only.
- This product is only suitable for exposure to temperatures in the range of -25°C to +60°C
- CAUTION! ONLY USE COLD OR WARM WATER TO CLEAN THE COOLING PACK.



FUNTASTIC LIMITED.  
Level 2, Tower 2, Chadstone Place,  
1541 Dandenong Road,  
Chadstone, 3148, Australia  
QUALITY GUARANTEE  
Funtastic Limited guarantees the quality of this Chill Factor™ Ice Twist.  
If it doesn't meet your expectations call us on 1800 244 543 or email info@funtastic.com.au  
Patent Protected.  
Chinese Patent: ZL 2005 8 0042009.8  
AUS Patent: 2005336204  
US Patent: 7,647,762  
Various International Patents Pending over product and composition of materials in product.



thechillfactor.com  
See me in action online.



WE MAKE COOL STUFF THAT MAKES STUFF COOL

	Project Name	Slushy Maker - Ice Twist
	Item No.	CF400501
	Packaging	Instruction
	Color	1C
	Size	228 x 128 mm
	Date	7 Apr 2014
Color Ref.		